



مصنع تاج الطعام للوجبات الجاهزة  
Taj Food Factory for Ready Meals



المصنع الأول من نوعه في المملكة



Unified No.: 92000128 | Email : info@tajff.com | www.tajff.com

## About Us



Taj Food factory is the first of its kind in the Kingdom. The plant is designed in Malaysia meeting the requirements of Food Safety Management Systems: Hazard analysis and critical control points (HACCP) "Risk management system that identifies, evaluates, and controls hazards related to food safety". It can accommodate up to 9 Production Lines with an exceeding Production Capacity of 12 millions meals per year.

The company has been working to attract Malaysian talents with previous experience in the same field in cooperation with a former factory in Malaysia carries the same concept and manufactures the same products.

## Challenges Vs. Solutions



- Higher Food Producing Standards. (Safe & Clean Manufacturing Process).
- Strategic Food Security & Reserve Solutions. (Crisis, Strikes & Natural Disasters).
- Pilgrims & Haji Food Solutions. (Catering, Storing, Cooking & Transporting).
- Military Food Solutions. (Lightweight, Full of nutrition & Long Shelf Life).
- Factories, Schools, Universities & Offshore Food Solutions. (Easy to Serve & Low Cost).





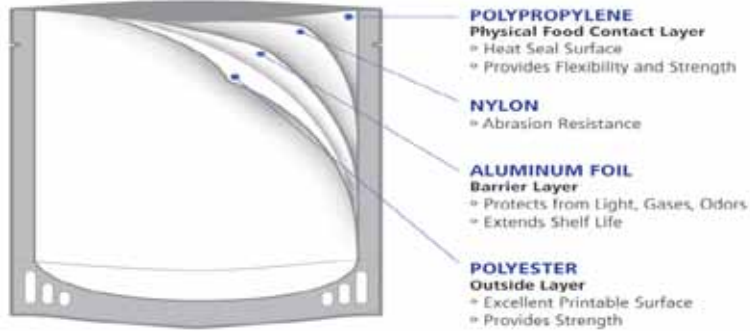
### 1. Meal, Ready-To-Eat (MRE).

Different varieties of meals served in heavy duty sealed pouches or trays, Ensures clean and easily opening, Serving wide range of tastes & cultures.

### 2. Cooking Sauces.

Different varieties of full convenience & high hygiene cooking sauces, Ready to be cooked through pouring over raw materials such as Meats, Noodles & Vegetables without any additions.

Long Shelf Life “Up to more than two years in room temperature”.  
High Quality & Manufacturing Standards.



The company has been working to attract Malaysian talents with previous experience in the same field in cooperation with a former factory in Malaysia carries the same concept and manufactures the same products.

The company aims to contribute an effective implementation of the “National Transition Plan 2030” by settling this industry in the kingdom since Saudi employees have been working alongside in company’s headquarters in Makkah for more than two years in carrying out Studies, Experiments, Machines Selecting & Communicating with international manufacturers.

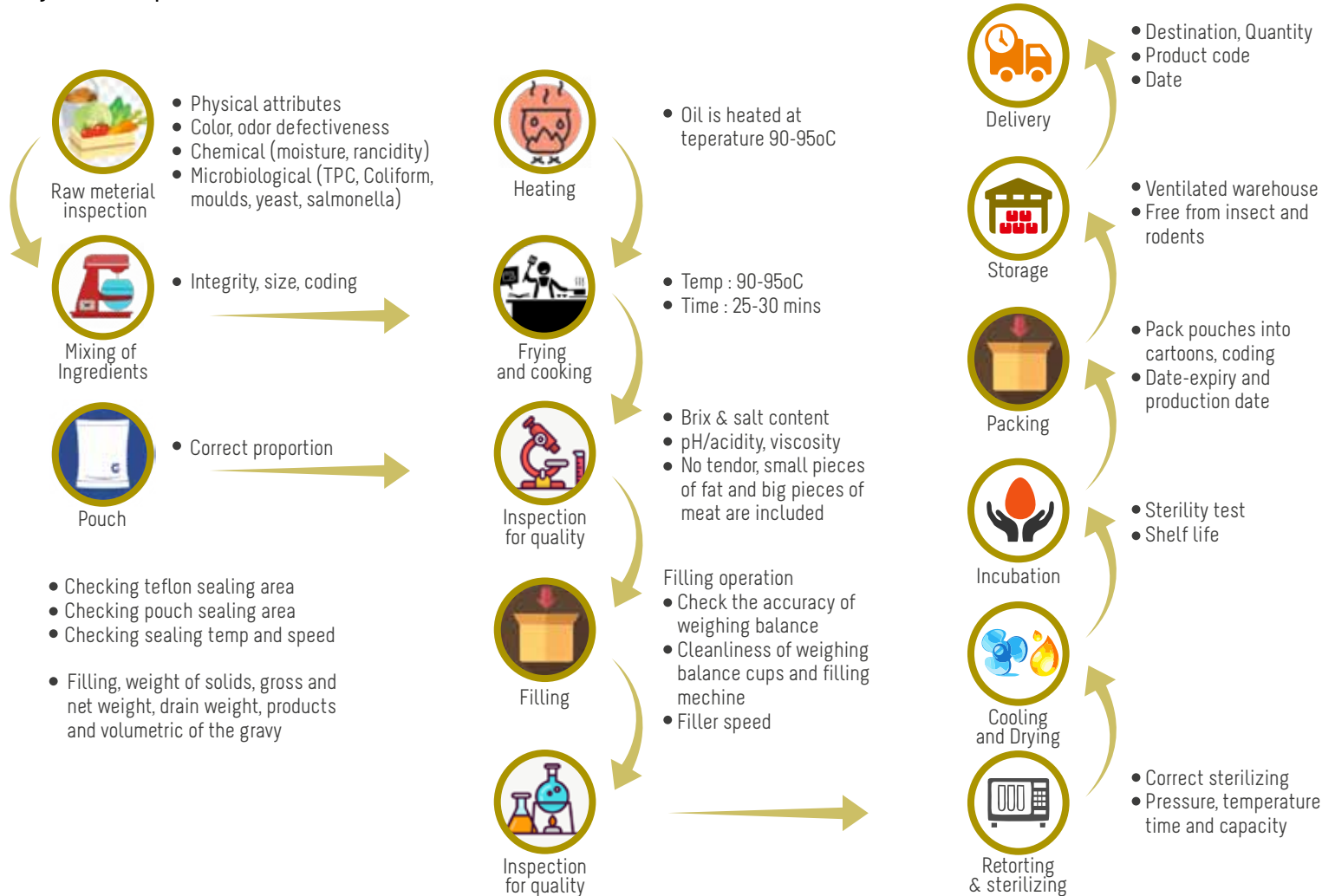


## Our History

- The Factory is constructed with the full utilities and infrastructure in order to accommodate the maximum number of production lines by June 2017.
- Testing & Commissioning for the first production line was conducted successfully August 2017.
- Actual Production has been started by January 2018.
- In parallel with construction phase, a complete equipment plant has been installed as a small factory model in company's headquarters in Makkah.
- Hundreds of Samples have been produced for quality tests to ensure the highest level of product satisfactions.
- Machines were selected & ordered for the first production line from specialized factories in South Korea, Japan and China by end of 2015.
- All machines passed the FAT manufacturing quality tests during Factories visits during 2016.
- 1st production line machineries arrived completely to Jeddah by February 2017.



# Our Quality Development Process









Breakfast Combo



Lunch Combo



Dinner Combo

